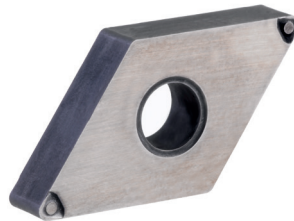
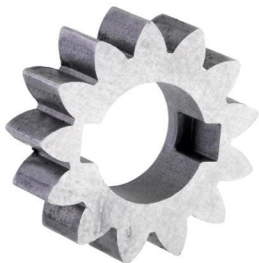


# AC microLine® 700





DOUBLE-SIDE BATCH PROCESSING MACHINE



WORK PIECES UP TO  
200 MM DIAMETER  
75 MM THICKNESS



## POWER MEETS FLEXIBILITY

-  Designed for high-precision processing of work pieces
-  Suited for fine grinding, lapping, honing, polishing, and deburring
-  Optimum surface quality, flatness, thickness tolerance and plane parallelism with tightest tolerances on the work piece
-  AC 700 can be linked with manual, semi-automatic or fully automatic loading systems

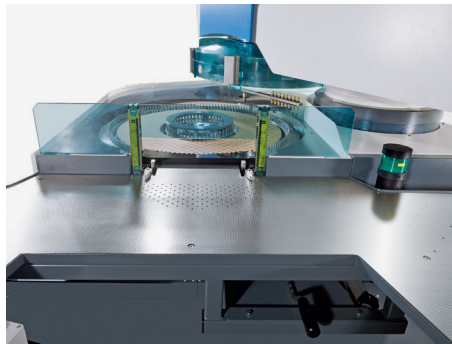
MAXIMUM PERFORMANCE FOR EVERY APPLICATION

## HIGHLIGHTS AC microLine® 700

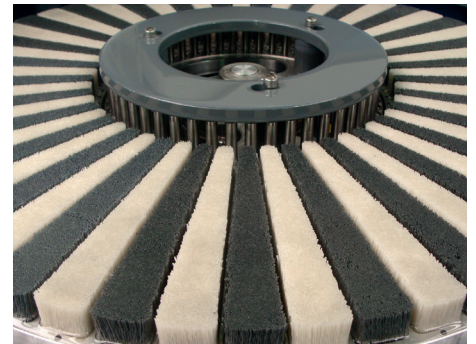
- ✔ Fast and ergonomic loading and unloading
- ✔ Upper working wheel can swivel out for total access to the process area
- ✔ Extreme temperature stabilization over the tool surface
- ✔ User friendly, intuitive operation
- ✔ Excellent machining results and precision
- ✔ Low operating costs
- ✔ Individual process development
- ✔ Easy to maintain
- ✔ High-precise non-contact measuring control
- ✔ Powerful drive technology
- ✔ High-precise pneumatic load system
- ✔ High production reliability
- ✔ Stable cast iron base frame
- ✔ Siemens PLC Control and Siemens KP1200 Comfort Panel
- ✔ Remote maintenance solution RangeCare® via mobile communications or VPN



View into the Twin Loader – for shortest carrier exchange time



View over the loading table in the processing area



Lower brushing wheel of the AC 700-D for double-side deburring of flat work pieces

TECHNICAL DATA	AC microLine® 700		
VERSION	F	F, H, D	L, P
Wheel diameter [mm]	720	720	740 / 760
Ring width [mm]	200	200	220 / 240
Max. load pressure [daN]	1000 / 1800	1000 / 1800	1000 / 1800
Upper / lower drive power [kW]	24 / 36	12	12
Upper / lower drive speed [rpm]	300 / 420	160	160
Center drive power [kW]	2.5	2.5	2.5
Center drive speed [rpm]	83	83	83
Working wheel cooling	wheel cooling	wheel cooling optional	wheel cooling
Machine dimensions [H × W × D] [mm]	2200 × 1900 × 1900	2200 × 1900 × 1900	2200 × 1900 × 1900
Machine weight without switch cabinet [kg]	4000	4000	4000
Max. work piece thickness [mm]	75	75	75
Max. work piece diameter [mm]	200	200	200

**GET IN TOUCH WITH US TODAY**  
**TOGETHER WE WILL FIND A SOLUTION**  
**FOR YOUR REQUIREMENTS**

**LAPMASTER WOLTERS GMBH**

Phone: +49 4331 458 0

ac@lapmaster-wolters.de

www.lapmaster-wolters.de