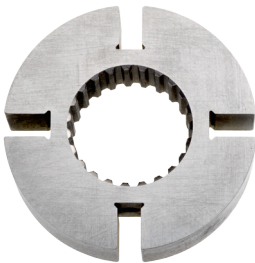


DDG 450/580

HIGH-PRODUCTION DOUBLE-DISK SURFACE GRINDING



FOR A LARGE VARIETY
OF WORK PIECES
UP TO 85 MM DIAMETER



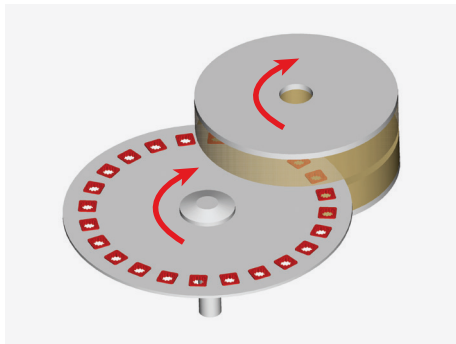
EFFICIENCY IN TOP FORM

- ✓ Designed for simultaneous grinding of parallel surfaces on a variety of work pieces
- ✓ Easy integration into existing and new production lines
- ✓ Compact system with outstanding machine rigidity
- ✓ High level of work piece precision with high throughput rates

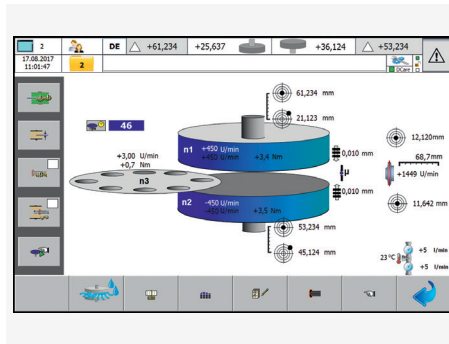
CONTINUOUS PRECISION FROM THE FIRST TO THE LAST PART

HIGHLIGHTS DDG 450 / 580

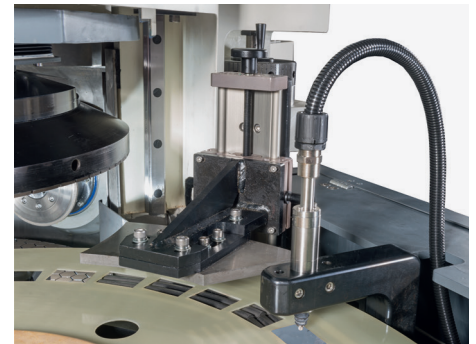
- ✔ Vertical grinding spindle arrangement
- ✔ Rotary throughfeed grinding
- ✔ Cooling lubricant feed through the center of the grinding spindles
- ✔ Integrated measurement control
- ✔ Linear dressing system with maximum dressing accuracy
- ✔ High process stability
- ✔ Automatic tool wear compensation for maximum accuracy
- ✔ Simple and accurate change of tilting with three tilting points
- ✔ Easy adjustment for different work pieces
- ✔ Stable cast-iron machine base
- ✔ Low space requirements
- ✔ Designed for conventional, diamond or CBN grinding wheels
- ✔ Siemens PLC Control and Siemens 12" Touch Panel
- ✔ Remote maintenance solution RangeCare® via mobile communications or VPN
- ✔ Compatible with all standard automation systems



Rotary throughfeed grinding



All process-relevant parameters and the measuring data are clearly displayed



Measuring device for automatic tool wear compensation

TECHNICAL DATA	DDG 450	DDG 580
Grinding wheel diameter [mm]	457	580
Grinding wheel ring width [mm]	178.5	202.5
Drive power per wheel [kW]	22 / 30	22 / 30
Peripheral wheel speed [m/s]	18 – 40	12 – 45
Machining process	Rotary throughfeed	Rotary throughfeed
Feed sensitivity of grinding wheels [mm]	0.001–0.1	0.001–0.1
Machine dimensions [H × W × D] [mm]	2300 × 2350 × 2560	2300 × 2350 × 2560
Machine weight without switch cabinet [kg]	6700	6700
Transport disc diameter [mm]	900	830
Max. work piece diameter [mm]	80	85

GET IN TOUCH WITH US TODAY
TOGETHER WE WILL FIND A SOLUTION
FOR YOUR REQUIREMENTS

LAPMASTER WOLTERS GMBH

Phone: +49 4331 458 0

info@lapmaster-wolters.de

www.lapmaster-wolters.de