

DDG 450 / DDG 600



HIGH-PRODUCTION DOUBLE-DISK SURFACE GRINDING



EFFICIENCY IN TOP FORM

With the DDG 450 and the DDG 600, LAPMASTER WOLTERS offers two high-precision and high-performance models in the range of through-feed grinding machines. Where ever a simultaneous grinding of parallel surfaces is required for a variety of work pieces. Two models, one pledge: long lasting precision from the first to the last part. Even under the harshest operating conditions. Various grinding processes are available for the machining of different work pieces.

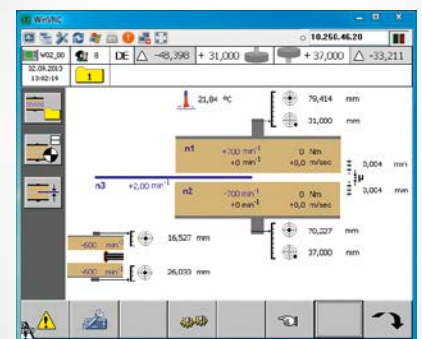
The space-saving and ergonomic design permits easy access, a high level of convenience for service and easy integration into existing and new production lines. The machine is operated using a Siemens multipanel. All important process-relevant parameters and the measuring data of the integrated post-process measurement are displayed. If requested, the data can be stored and passed onto internal networks.

We offer manual part loading along with various automation options using a tube magazine and vibratory bowl through to a completely automated solution.



FEATURES DDG 450 / DDG 600

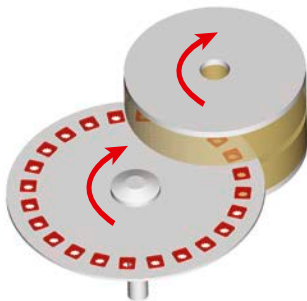
- Tiltable, compact dressing system
- Vertical grinding spindle arrangement
- CBN and diamond grinding wheels optional use
- Minimal space requirement
- Modern, ergonomic construction
- Options
 - Rotary throughfeed grinding
 - Linear throughfeed grinding
- Automation solutions for loading and unloading to specific customer requirements
- High axial and flexural strength of the machine design
- Feed motion of the grinding tool electromechanical, infinitely controllable
- Grinding spindle head saddle feed with re-tensioned anti friction slideway
- Highly accessible tilting points
- Dressing tool feed motion is electromechanical with infinitely variable control of feed motion speed
- Totally enclosed working space
- Stable foundation plate
- Adjustable slideways
- Cooling lubricant feed through the centre of the grinding spindle
- Integrated measurement control (Option)
- Grinding wheel position controller
- Extremely low and easy maintenance
- Easy maintenance construction



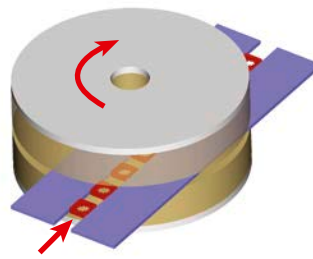
All important process-relevant parameters and the measuring data of the integrated post-process measurement are clearly displayed

TECHNICAL DATA

	DDG 450	DDG 600
Grinding wheel diameter (mm)	457	600
Grinding wheel face (mm)	80	140 / 380
Machining process	Rotation	Rotation / linear
Drive power per grinding wheel (kW)	22	37 / 45
Separate feed sensitivity grinding wheels with independent infinitely variable speed control (mm)	0.001–0.10	0.001–0.10
Space required – vertical machine (without unit) (mm)	1400 × 1800	2100 × 2400
Weight (kg)	4500	9200



Rotary throughfeed grinding



Linear throughfeed grinding

DDG SERIES: HIGH-PERFORMANCE TEAM PLAYER



For maximum productivity:
DDG 450 and downstream BD 300-L deburring
system with flip-over device

CUSTOMER BENEFITS

- Maximum dressing accuracy, simple tool change
- High performance (optional controllable rotational speed), flexibility with feed solutions
- Long service life, safeguards investment through changeover capability
- Easy integration into existing and new production lines, low space costs
- Very good accessibility, very easy to service, safe and simple operation
- Through choice of the grinding operation optimal accommodation of accuracy requirements and throughput
- Reduction of piece part and operator costs
- High process stability over the machine service life
- Variable control for optimal tool wear compensation
- Process stability
- Simple and accurate change of tilting during the process
- Variable control for maximum flexibility
- Maximum operator safety
- Low oscillation and low vibration operation, durable, safeguards investment
- Easy adjustment for different work pieces
- Optimum cooling lubricant distribution in the critical grinding zone
- Maximum process stability and control
- Tool wear compensation of the lower grinding wheel for maximum accuracy
- Minimal operating running costs
- Minimal service expenditure



Sensor Technology for the Optical Measurement of Grinding-wheel Position in a DDG 600

LAPMASTER WOLTERS

Buesumer Str. 96 • 24768 Rendsburg, Germany
Phone: +49 (0) 4331/458-0 • info@lapmaster-wolters.de

