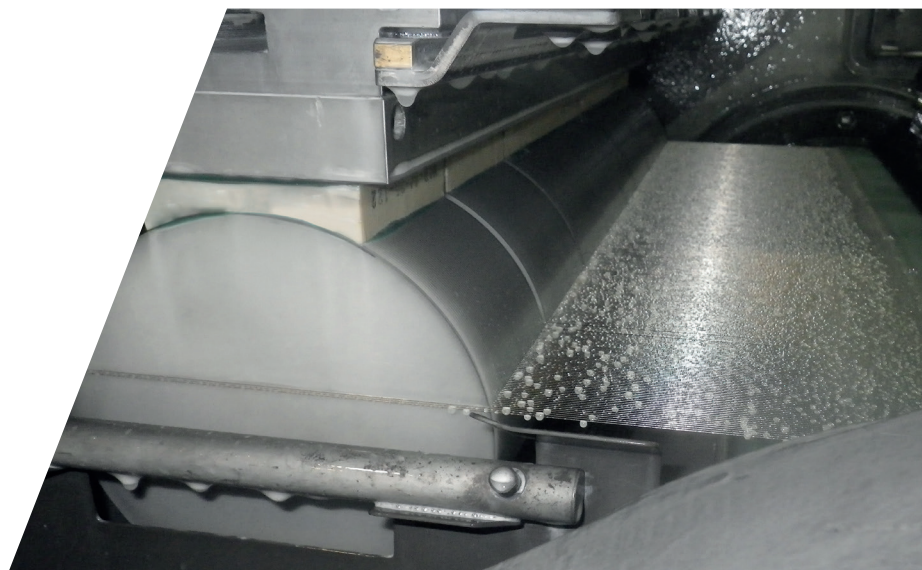
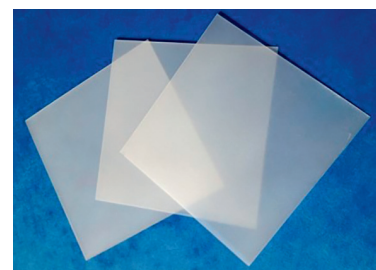
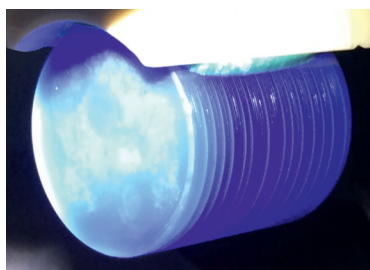


# DW 288 S6

MULTI WIRE SAW



WORK PIECE DIMENSIONS:  
MAX. Ø 6" × 650 MM



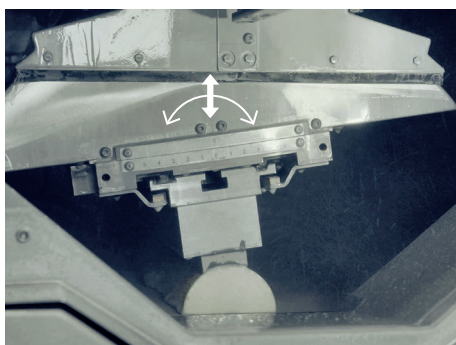
## OPTIMIZED FOR HIGH VOLUME 6" WAFER PRODUCTION

- ✓ Increased throughput
- ✓ Highest precision and quality
- ✓ Robustness and durability
- ✓ Higher degree of automation

SMART SLICING TECHNOLOGY FOR SAPPHIRE, HARD AND BRITTLE MATERIALS

## HIGHLIGHTS DW 288 S6

- ✔ Smallest axis distance:  
Optimized for Ø 6"
- ✔ High capacity:  
650 mm web length
- ✔ High throughput:  
30 m/s wire speed,  
10 m/s<sup>2</sup> acceleration
- ✔ Latest generation work piece  
rocking technology
- ✔ Adaptive feed
- ✔ New CF system:  
Low maintenance heat exchanger,  
stable temperature in entire system,  
shortest pipe path
- ✔ Easy operation:  
HMI on 15" touch screen,  
production assistant, easy to train,  
easy to use
- ✔ Recipe generator for 60-step recipe
- ✔ Ready for Industry 4.0
- ✔ Various options:  
i. e. Diamond Wire Management  
System (DWMS)



Optimized rocking for higher wafer quality



Longer load length for higher capacity



Easy operation for higher yield

TECHNICAL DATA	DW 288 S6 FEATURES
Web length [mm]	650
Max. work piece dimensions [mm]	Ø 165 × 650
Wire speed [m/s]	30 (1800 m/min)
Wire acceleration [m/s <sup>2</sup> ]	10 (< 4 s)
Min. wire diameter [µm]	100
Max. wire tension [N]	45
Rocking principle	Rocking of work piece
Rocking angle [°]	± 12
Wire guide roller axis distance [mm]	390
Cutting fluid tank [l]	240
Machine dimensions [L × W × H] [mm]	3700 × 1780 × 3010
Machine weight [kg]	11500

**GET IN TOUCH WITH US TODAY**  
**TOGETHER WE WILL FIND A SOLUTION**  
**FOR YOUR REQUIREMENTS**

**LAPMASTER WOLTERS GMBH**

Phone: +49 4331 458 0

wiresaws@lapmaster-wolters.de

www.lapmaster-wolters.de