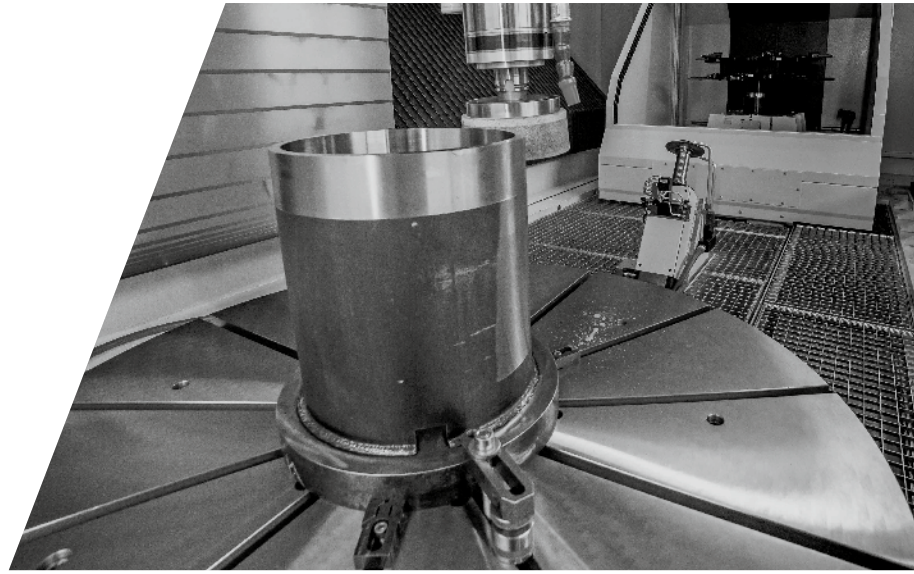
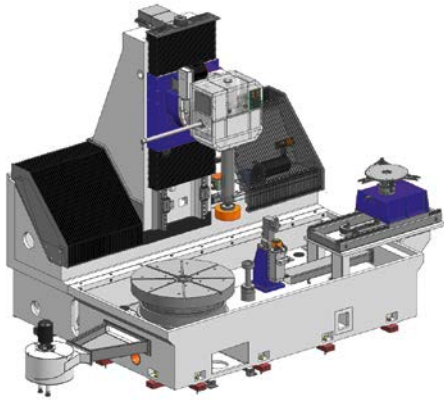
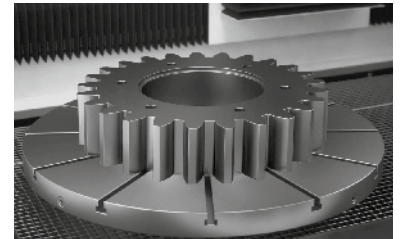
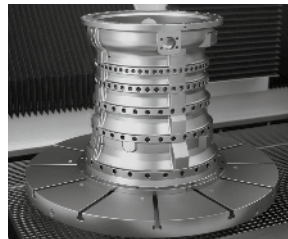
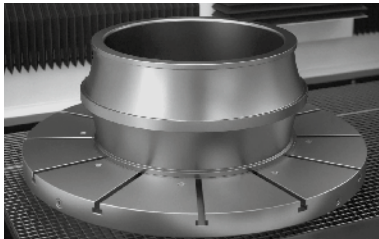


MODIREX

UNIVERSAL ROTARY TABLE GRINDING MACHINES



WORK PIECES UP TO MAX.
Ø 1400 MM AND HEIGHT 1000 MM



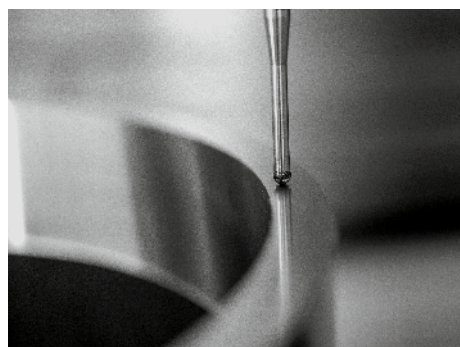
GRINDING OF STATORS, BEARINGS, GEARS, ETC.

- ✓ Highest precision, flexibility and performance
- ✓ Quick and variable retooling with tool changer
- ✓ Wide range of grinding applications for rotationally symmetrical work pieces
- ✓ Easy programming via parameter entry

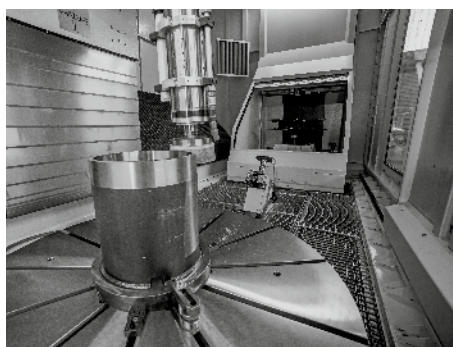
COMPLEX MACHINE DESIGN FOR HIGHEST ACCURACY

MODIREX - UNIVERSAL GRINDING & MANY OTHER APPLICATIONS

- ✔ Low-vibration and robust construction
- ✔ Up to 4 spindles possible
- ✔ Grinding capacities from 7,5 – 60 kW
- ✔ Dressing spindle next to the rotary table
- ✔ Up to 5 axes CNC grinding centre
- ✔ Optionally with turning and measuring
- ✔ Control (Siemens or Fanuc)
- ✔ Extensive software exactly for your application
- ✔ Complete enclosure for protection of the operator and the machine from external influences
- ✔ Additional units:
 - dust and fume extraction equipment
 - coolant system
 - hydraulic power pack
- ✔ Air-conditioned switch cabinet
- ✔ Tool changer
- ✔ Control panel for control and monitoring of the process



Measuring procedure with probe



Functional arrangement of the individual modules



Complete enclosure with aggregates

TECHNICAL DATA					
MODIREX	600	800	1000	1200	1400
Table-Ø [mm]	600	800	1000	1200	1400
Swing diameter Ø [mm]	800	1000	1200	1400	1600
Z-axis / options [mm]	800/1100/1400	800/1100/1400	1100/1400/2000	800/1100/1400	1100/1400/2000
X-axis (with / without tool changer) [mm]	1700/1500	1700/1500	2200/2000	2200/2000	2200/2000
Table [rpm]	300	300	300	300	300
Guidance system	Compact guideway	Compact guideway	Compact guideway	Compact guideway	Compact guideway

GET IN TOUCH WITH US TODAY
TOGETHER WE WILL FIND A SOLUTION
FOR YOUR REQUIREMENTS

REFORM GRINDING TECHNOLOGY GMBH

Phone: +49 661 4959 00

info@reform.de

www.reform.de