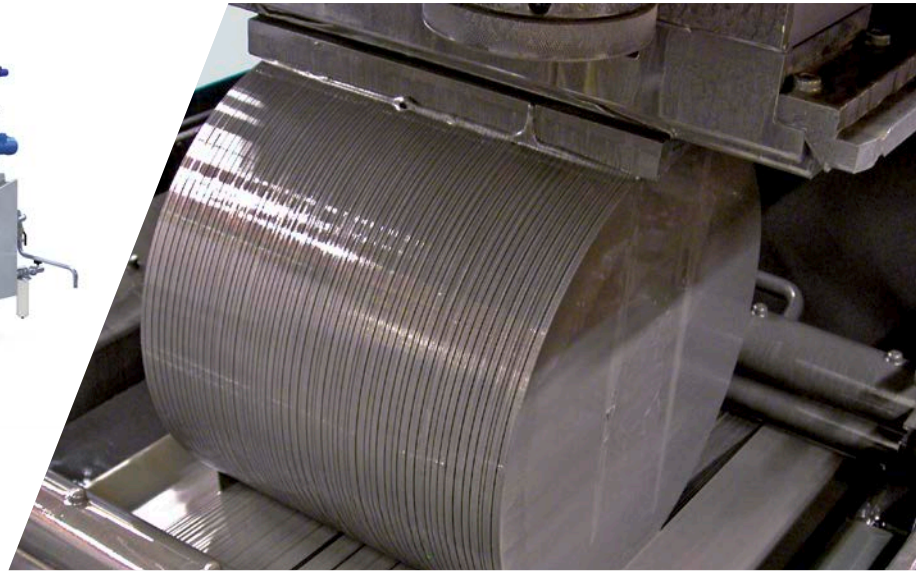
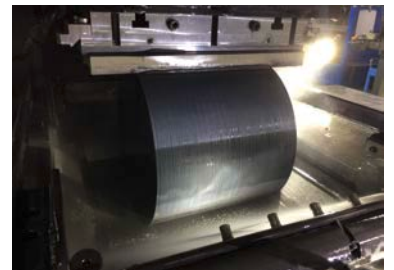
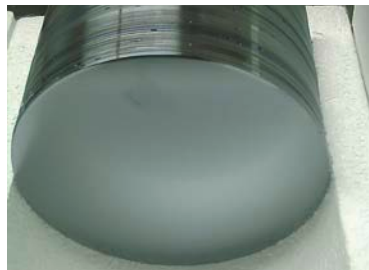
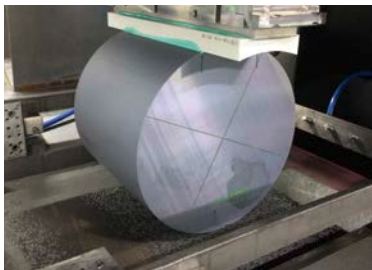


DS 261

MULTI WIRE SAW



WORK PIECE DIMENSIONS:
MAX. Ø12" × 400 MM



12" WAFER WITH HIGHEST SURFACE QUALITY

- ✔ Compact and solid construction
- ✔ High thermal and vibration stability
- ✔ Lowest warp, waviness and TTV values
- ✔ Excellent results in nano-topology

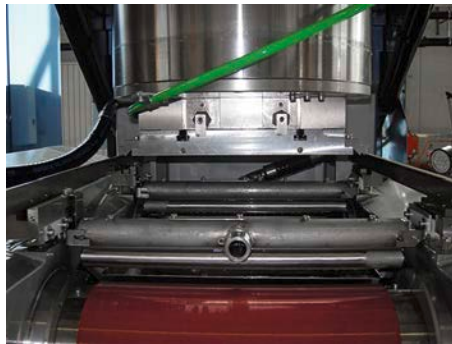
PRECISE SLURRY WIRE SAW FOR HIGH END INDUSTRIES

HIGHLIGHTS DS 261

- ✔ New operator guided HMI and electrical system on Series 6 release
- ✔ Wide range of applications: silicon, quartz, gallium arsenide and other hard & brittle material in different dimensions
- ✔ Proven slurry technology and DW ready
- ✔ Optimized slurry temperature control
- ✔ 60-step recipe enables optimal process tuning
- ✔ Automated cutting process and perfect accessibility
- ✔ Optional work piece orientation



Robust design for lowest warp



Perfect alignment for highest precision



Easy operation for higher yield

TECHNICAL DATA	DS 261 FEATURES
Web length [mm]	410
Max. work piece dimensions [mm]	Ø 305 mm × 400 (Ø 18" on request)
Wire speed [m/s]	15 (900 m/min)
Wire acceleration [m/s ²]	2.5 (< 6.5 s)
Min. wire diameter [µm]	120
Max. wire tension [N]	50
Wire guide roller axes distance [mm]	600
Cutting fluid	Slurry
Slurry tank [l]	175
Machine dimensions [L × W × H] [mm]	2980 × 4120 × 3340
Machine weight [kg]	12000

GET IN TOUCH WITH US TODAY
TOGETHER WE WILL FIND A SOLUTION
FOR YOUR REQUIREMENTS

PRECISION SURFACING SOLUTIONS GMBH

Phone: +41 33 224 26 00
 info@precision-surface.ch
 www.precision-surface.ch